



High-Performance, Energy-Efficient Air Compressors



Screw Air Compressors
for Reliability & Performance
7.5 – 37 kW / 10 – 50 HP



The Smart Compressed Air Solutions for Industries

Tropical Tough | Low Total Cost Of Ownership
Best-In-Class Reliability | Energy Efficiency

The ARIa range of oil-injected rotary screw air compressors is designed to deliver unmatched reliability, durability, and exceptional performance. These compressors provide a robust solution tailored to meet the unique needs of industrial operations, ensuring seamless functionality even in the most demanding environments. With their innovative design and superior engineering, ARIa compressors minimise the total cost of ownership while consistently meeting compressed air requirements.

Industries such as automotive, chemicals, plastics and rubber, food and beverage, fast-moving consumer goods, sorting, packaging, pharmaceuticals, fabrication, ceramics, and workshops rely heavily on compressed air to sustain operations. As vital pillars of the global economy, these sectors benefit significantly from the ARIa range dependable and high-performing solutions, enabling uninterrupted production and operational excellence.

Whether you seek reliability, sustainability, or energy efficient performance, ARIa air compressors are crafted to align with industrial demands, making them the smart choice for your compressed air needs.

Applications



Automotive



Chemical & Pharmaceuticals



Food & Beverage



Paper & Packaging



Plastics



Sorting



Distillery



Ceramic



Fabrication & Machining

ARiA

Tropical Tough & Reliable Rotatory Screw Compressors

The ARiA range of oil-injected rotary screw air compressors is expertly designed to deliver exceptional reliability, robust performance, and long-lasting durability, catering to even the most demanding compressed air requirements. Specifically engineered for India's tropical conditions, these compressors operate effortlessly in ambient temperatures of up to 53°C. With an in-house manufactured air end, they ensure superior efficiency, performance, and dependability.

Offered in capacities ranging from 7.5 kW (10 hp) to 37 kW (50 hp), ARiA compressors are highly versatile and suited for a wide range of industrial applications. They are equipped with a Bluetooth-enabled control system for seamless Near Field Connectivity, enhancing operational convenience. Their rugged construction, user-friendly design, and outstanding quality make them a trusted solution for long-term use.



Experience World-Class Excellence with the ARiA Range – A Testament to the Make in India Vision

The ARiA range of air compressors embodies the Make in India vision, showcasing our commitment to self-reliance and engineering excellence. Every critical component, from compressor casings to screw, is 100% designed and manufactured in-house at our state-of-the-art facilities. With an in-house foundry for superior castings and advanced rotor manufacturing processes, the ARiA range

delivers unmatched efficiency, reliability, and durability. These compressors are a seamless blend of world-class engineering and indigenous manufacturing, offering exceptional value at competitive costs. Choosing ARiA means supporting India's industrial strength while investing in a solution that meets global standards for performance and quality.

Who We Are

Welcome to ARiA, where innovation and reliability converge in the realm of compressed air solutions.

Kirloskar Pneumatic Company Limited

Founded by Shantanurao Kirloskar in 1958, Kirloskar Pneumatic Company Limited is one of the flagship companies of the Kirloskar Group - India's Premier Engineering conglomerate with 135+ years of legacy. Since its inception, our company has been a symbol of industrial excellence. We operate three state-of-the-art plants across India, specializing in the manufacture of air compressors, refrigeration compressors, and process gas compressors. With a global presence and esteemed certifications such as ISO 9001, ISO 14001, and OHSAS 18001, we are dedicated to continuous innovation and unmatched quality.

Partnership with Atmos—Chrast Industries

Atmos, a distinguished European engineering company with a legacy spanning 125 years, brings extensive expertise and experience to our partnership. Known for their engineering excellence, Atmos specialises in high-quality air compressors. Their commitment to innovation, reliability, and sustainability sets industry standards, making them a valuable partner in delivering superior compressed air solutions.



ARiA's Manufacturing Philosophy: Excellence, Innovation, and Sustainability

At ARiA, manufacturing embodies a relentless pursuit of excellence, creativity, and sustainability. Our integrated manufacturing standards ensure top-tier performance, reliability, and sustainability. These standards enhance our capabilities, uphold exceptional quality, and foster innovation with unparalleled design flexibility.

In-House Foundry: Precision and Excellence in Casting



Our in-house foundry produces high-quality castings designed specifically for our air ends, ensuring precision and reliability. By overcoming challenges in quality, cost, and delivery, it forms the backbone of our ARiA air compressors. With advanced engineering and a first-time-right approach, the foundry delivers intricate and robust structures, reflecting our commitment to innovation and excellence.

In-House Screw Rotor Manufacturing: Precision Redefined



We excel in manufacturing screw rotors in-house, a complex process demanding precise screw profile design and micron-level machining accuracy. With advanced design expertise and cutting-edge manufacturing capabilities, we are among the few globally to produce our own air ends. Our state-of-the-art facility, equipped with high-precision grinding, milling, and turning machinery, ensures unmatched accuracy and reliability in every component.

Precision Assembly for Zero-Defect Compressors



Our advanced compressor assembly lines integrate air ends, prime movers with precision to ensure optimal performance. Powered by an Industry 4.0-enabled facility, we maintain complete control over materials, supply chain, and quality. This integrated manufacturing approach ensures zero-defect products and superior reliability through continuous improvement.

Features



Tropical Tough



Air-Ends



Power Consumption



Installation



Maintenance

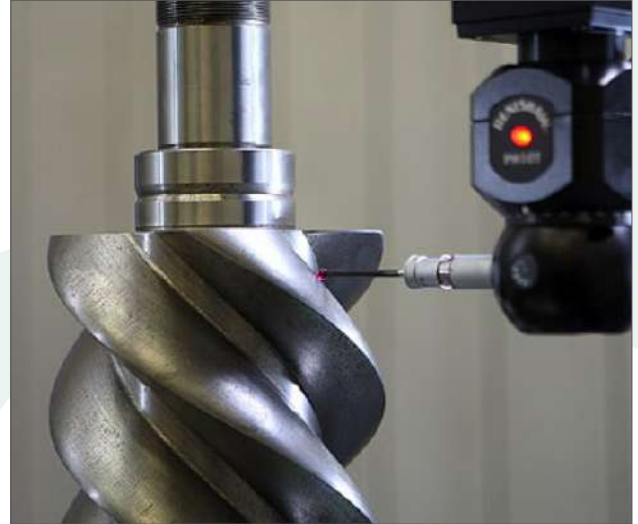


Air Ends - The Heart of Compressor

The screw block is the heart of every compressor. In ARiA compressors, we utilise Advanced K-Profile screw blocks, which are proudly manufactured in our own state-of-the-art facility. Employing cutting-edge technology, we ensure precision to within a few thousandths of a millimetre.



Production with micrometre accuracy



3D measurement of every machined component

Direct Drive



For Reliability & For Efficiency

ARiA rotatory Air Compressors use a unique design of the connection between the screw block and the drive motor. Screw block, drive motor and cooling fan are directly connected and placed on a single axis *. This design excels

in its exceptional reliability, almost loss - free transmission of the drive motor power to the block and reaches maximum compression efficiency.

*does not apply to all models.

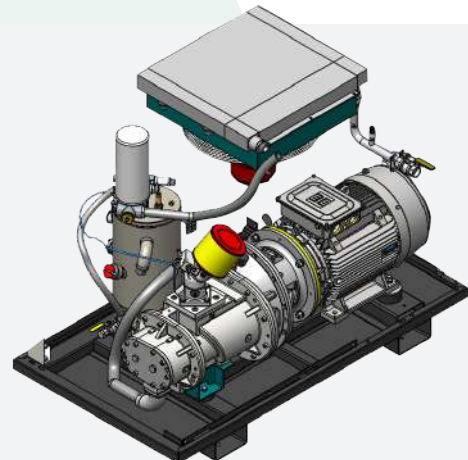
Features and Benefits



Efficient Airends

High Performance & Energy Saving

The ARiA compressors feature a highly efficient K-profile air end with a 4 by 5 lobe design, minimizing mechanical losses, reducing leakages, and maximizing airflow. Enhanced with durable SKF bearings, they ensure smooth and reliable operation, offering an impressive design lifespan of 60,000 to 1,25,000 hours for long-term dependability. These highly efficient air-ends set new standards, taking performance to the next level and positioning them as best-in-class.



Advanced Cooling System

Consistent Performance & Long Life

The cooling system, featuring optimised fans and an larger cooler surface area, delivers exceptional cooling performance. The integrated fan* on the main motor consumes minimal power while maintaining the oil temperature within an ideal range, thereby extending the lifespan of the components. This intelligent cooling system also ensures that the temperature of the discharged compressed air remains low, reducing the strain on downstream equipment.



Tropical Tough Performance

Reliability under Extreme Conditions

ARIA compressors are designed to perform reliably in ambient temperatures up to 53°C, making them ideal for demanding industrial environments. Featuring Type II Coordination, the electrical panels ensure robust protection for both equipment and personnel. Oversized coolers and motors are tailored for high-temperature operations, while hoses withstand up to 150°C.



Easy Maintenance

Simplifying Service, Maximizing Savings

The ARiA compressors are designed for effortless maintenance, featuring a streamlined canopy design with single-door access with ample space for easy dismantling and consumable replacement. Optimized consumable life, reduced oil consumption, and an integrated intake valve further minimize maintenance costs and downtime, making it a reliable and cost-effective solution for diverse industrial applications.



Low Oil Carry Over

Excellent Air Quality

Advanced Oil Separation by impact and centrifugal action separate air and oil with minimum pressure drop. This process of removing oil, delivers consistent low oil carryover. This efficient system also increases the life of the air-oil separation filter.

Advanced ARiA Controller



The advanced ARiA controller is everything that you will need for a superior and reliable compressor operation. The industrial - grade user interface offers a seamless experience in setting the compressor operational parameters and controlling performance with user friendly indications and alarms.



Monitor and display air pressure, air temperature and other critical temperature.



Data Logging and Event History :

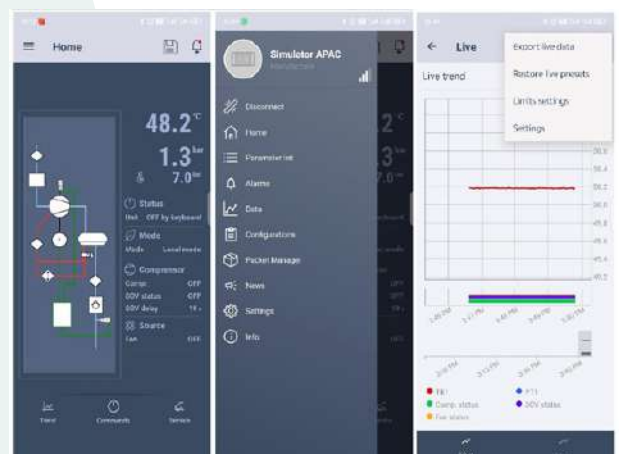
Logs parameters every 10 minutes, storing up to 1200 entries. Maintains a record of the last 80 alarm/trip events in the log history for quick diagnostics and analysis.



NFC Connectivity : Using the mobile app user can configure compressor parameters seamlessly. Export data trends for key operating parameters such as pressure, temperature, SOV status, fan status, and compressor status for detailed analysis



Convenient Set-up: Seamlessly set up and adjust operating modes, including pressure settings, to optimize performance across diverse applications.



ARiA 7.5 – 22

The ARiA 7.5 - 22 Screw air compressors features a compact design for easy placement using standard forklifts or pallet jacks, its plug-and-play concept ensures a hassle-free installation process.

Continuous Duty

Operates at lower temperatures and achieves 25-30% better efficiency than reciprocating compressors.

Air End Reliability

In-house manufactured and designed for longevity, these air-ends are designed to last, with bearings designed for a lifespan of 60,000 to 1,25,000 hours.

Air End Efficiency

The K-profile air end achieves superior efficiency with its 4 by 5 lobe configuration, minimizing mechanical losses, reducing leakages, and maximizing effective area.

Tropical-Tough Design and Oversized Coolers

Engineered for operation in temperatures up to 53°C, ensuring optimal performance in hot, humid conditions with efficient heat dissipation.



Tank Mounted* and Low Noise Level

Designed for workplace convenience, the compressors feature easy mobility and plug-and-play installation. Their low noise levels allow installation directly on the shop floor, removing the need for a separate compressor room.

Reliable Components

Utilizes components from top vendors to enhance machine reliability.

Bluetooth Control with Microprocessor

Intuitive operation, real-time monitoring, and remote management via Bluetooth connectivity with embedded microprocessor technology.

Specification Table

Model		ARiA 7.5		ARiA 11		ARiA 15		ARiA 18.5		ARiA 22	
Pressure	bar	7.5	10	7.5	10	7.5	10	7.5	10	7.5	10
Free Air Delivery	CFM	42	32	60	58	88	71	110	86	126	102
Motor	kW	7.5		11		15		18.5		22	
Noise	dB(A)	≤ 68		≤ 70		≤ 76		≤ 78		≤ 78	
Weight	kg	225		325		360		380		460	
Dimension (L X W X H)	mm	1396 x 666 x 626		1600 x 760 x 772		1600 x 760 x 772		1600 x 760 x 772		1600 x 760 x 772	

Model		ARiA 7.5 T		ARiA 11 T		ARiA 15 T		ARiA 18.5 T		ARiA 22 T	
Pressure	bar	7.5	10	7.5	10	7.5	10	7.5	10	7.5	10
Free Air Delivery	CFM	42	32	60	58	88	71	110	86	126	102
Motor	kW	7.5		11		15		18.5		22	
Noise	dB(A)	≤ 68		≤ 70		≤ 76		≤ 78		≤ 78	
Weight	kg	355		495		530		550		630	
Dimension (L X W X H)	mm	2090 X 666 X 626		2110 X 760 X 1465		2110 X 760 X 1465		2110 X 760 X 1465		2110 X 760 X 1465	

Note: • Due to continuous engineering improvements, specifications are subjected to change without prior notice. • T Models are with Receiver Tank*

- Unit Performance measured according to ISO 1217 Ed 3 Annexure-C, 1996 at nominal working pressure of 7 and 9.5 bar.g
- All models given above are air cooled

Receiver Sizing:

*For ARiA 7.5 Model the tank size volume is 330 liters

*For ARiA 11 - 22 model the tank size is 500 liters

ARiA 30 – 37

The ARiA 30-37 compressors are industrial workhorses, built tough for quiet operation and energy efficiency. They combine global expertise for unmatched performance, reliability, and extended lifespan in harsh Indian conditions.

Assembly

Robust design with independent frame for enhanced machine stability.

Soundproof Steel Body

Enclosed in a soundproof steel body to minimize noise levels during operation.

Innovative Suspension System

Integrated suspension system reduces vibrations, ensuring long-term stability and machine rigidity.

Low-Speed Screw Blocks

Utilizes low-speed screw blocks with patented K-profile to reduce energy consumption.

Direct Gear Drive

Eliminates traditional belt drives, increasing efficiency, reducing energy consumption, and enhancing reliability.



Type II Electrical Protection

Electrical panels feature Type II protection to prevent short circuits and ensure uninterrupted operation.

High Ambient Temperature Operation

Designed to operate efficiently in ambient temperatures up to 53°C, ideal for harsh tropical climates.

Specification Table

Model		ARiA 30		ARiA 37	
Pressure	bar	7.5	10	7.5	10
Free Air Delivery	CFM	202	160	234	206
Motor	kW	30		37	
Noise	dB(A)	≤ 78		≤ 78	
Weight	kg	820		835	
Dimension (L X W X H)	mm	1620 x 925 x 1320		1620 x 925 x 1320	

Note:

- Due to continuous engineering improvements, specifications are subjected to change without prior notice.
- Unit Performance measured according to ISO 1217 Ed 3

Annexure-C, 1996 at nominal working pressure of 7 and 9.5 bar.g

- All models given above are air cooled

ARiA ARD Series Air Dryers

The Aria Refrigerated Dryers (ARD) ensure dry, high-quality compressed air by effectively removing moisture, protecting against corrosion, and enhancing system performance. With energy-efficient operation, compact

design, and reliable dew point control, they deliver consistent results while reducing maintenance needs. Designed for efficiency and durability, they are ideal for industrial applications.



Product Specifications

Model	Flow	Power Consumption	End Connection	Dimension H x W x D	Weight
	CFM	kW	Inch	mm	kg
ARD 50	60	0.30	1/2" BSP	556 x 252 x 578	48
ARD 60	80	0.60	1" BSP	651 x 252 x 602	65
ARD 90	100	0.60	1" BSP	651 x 252 x 602	65
ARD 125	150	0.90	1-1/2" BSP	828 x 322 x 986	123
ARD 150	200	1.50	1-1/2" BSP	828 x 322 x 986	129
ARD 200	250	1.50	1-1/2" BSP	828 x 322 x 986	129
ARD 250	300	1.70	2" BSP	1251 x 490 x 1005	140

- Note:**
- Specifications are subjected to change without prior notifications.
 - All Models have air cooled condenser as the default option
 - Maximum Working Pressure: 16 bar
 - Refrigerants: R134a: ARD 60 to 150
R407c: ARD 200 & 250

ARiA Compressed Air Filters

The Aria downstream filters deliver clean, contaminant-free air by removing particulates, oil aerosols, and impurities from the compressed air, ensuring equipment

protection and optimal performance. Built for efficiency, durability, and easy maintenance, they provide reliable filtration across diverse industrial applications.



Technical Data

Model	Flow	Pipe Size	Max Working Pressure	Housing Dimensions		
				A	B	C
	CFM	Inch	Bar	mm		
ADF / APF / AFL / ACF 60 AD	60	1/2"	16	87	294	50
ADF / APF / AFL / ACF 150 AD	150	1"	16	114	399	50
ADF / APF / AFL / ACF 350 AD	350	1-1/2"	16	114	474	50

Note: APF: ARiA Dust - Filter | AFF: ARiA Pre - Filter | AOL: ARiA Fine - Filter | ACF: ARiA Carbon - Filter



Aria: Anytime, Anywhere, We've Got You Covered!

At ARiA, we prioritize the continuous operation of screw compressors by minimizing disruptions and downtime.

Our skilled service expert team offers efficient robust aftermarket support, including proactive measures like preventive maintenance, responsive repair services for breakdowns, and customizable service contracts.

Our 24/7 customer care facility ensures immediate assistance whenever you need it. We emphasize efficiency and customer satisfaction with doorstep service at your convenience. Choose Aria for your air compressor service needs and experience our unwavering commitment to quality and reliability.



www.ariacompressors.com

REGD. OFFICE : Plot No. 1, Hadapsar Industrial Estate, Hadapsar, Pune, Maharashtra - 411 013, India.
PLANT : Saswad, Taluka Purandhar, Disrict: Pune 412 302. India.
Ph : 020 - 26727000 | Fax : 020 - 2687 0514 / 0297 | Email : ariasales@kirloskar.com

MUMBAI
1002, Vikas Centre, 10th Floor, Dr. C. G. Road,
Near Basant Cinema., Chembur (E), Mumbai -400 074.
Tel.: 022-2521 9500

KOLKATA
15, Ganesh Chandra Avenue, 9th Floor, Kolkata 700013.
Tel: 033-22119080/81

AHMEDABAD
303, 'Samruddhi', Opp. Gujarat High Court,
P.O. Navjivan, Navarangpura, Ahmedabad- 380 014.
Tel: 079-27541898, 27540030

NEW DELHI
208, Meghdoot, 94, Nehru Place, New Delhi- 110 019.
Tel: 011-46561664/66

HYDERABAD
S. No. 3-8-907, Flat No. 403/4, Mahavirlok Himayat
Nagar, Hyderabad-500 029.
Tel: 040-23260743, 23260746

CHENNAI
5th Floor, B Wing, KGN Towers, No. 62
Ethiraj Salai, Egmore, Chennai 600 008
Tel: 044 28193066, 28190436, 28192092

LUCKNOW
16, Vidhan Sabha Marg, Lucknow-226 001.
Tel: 0522-2624367, 2627120